



Is Student Engagement Rising in Ten Years at Housatonic Community College? A Look at Indicators of Full and Part Time Students



2004, 2006, 2008, 2011, and 2015

In comparison to national results based on a publication by the Center for Community College Survey for Student Engagement (CCSSE)

HCC Office of Institutional Research, Planning, and Effectiveness - Beacon Hall 285 Source: CCSSE data for HCC 2004,2006,2008,2011, and 2015

Summary

The Center for Community College Survey for Student Engagement (CCSSE) was established in 2001 to serve community college educators in learning about student engagement and the role it plays in student success. The focus has primarily been to restructure policy and practice in order to best serve our community college students with their success. In 2015, after ten years of collecting data, CCSSE published a document entitled [Engagement Rising, A Decade of CCSSE Data Shows Improvements Across the Board.](#)

The CCSSE Center was contacted by the HCC Office of Institutional Research, Planning, and Effectiveness to obtain the exact figures for the national data and compared with the HCC results from the years the surveys were administered on campus.

The following data in this report compares the national data to the HCC student results. HCC students completed the survey in 2004, 2006, 2008, 2011, and 2015. The full time and part time student results are as follows.

Increased Engagement over 10 years for HCC students reporting:

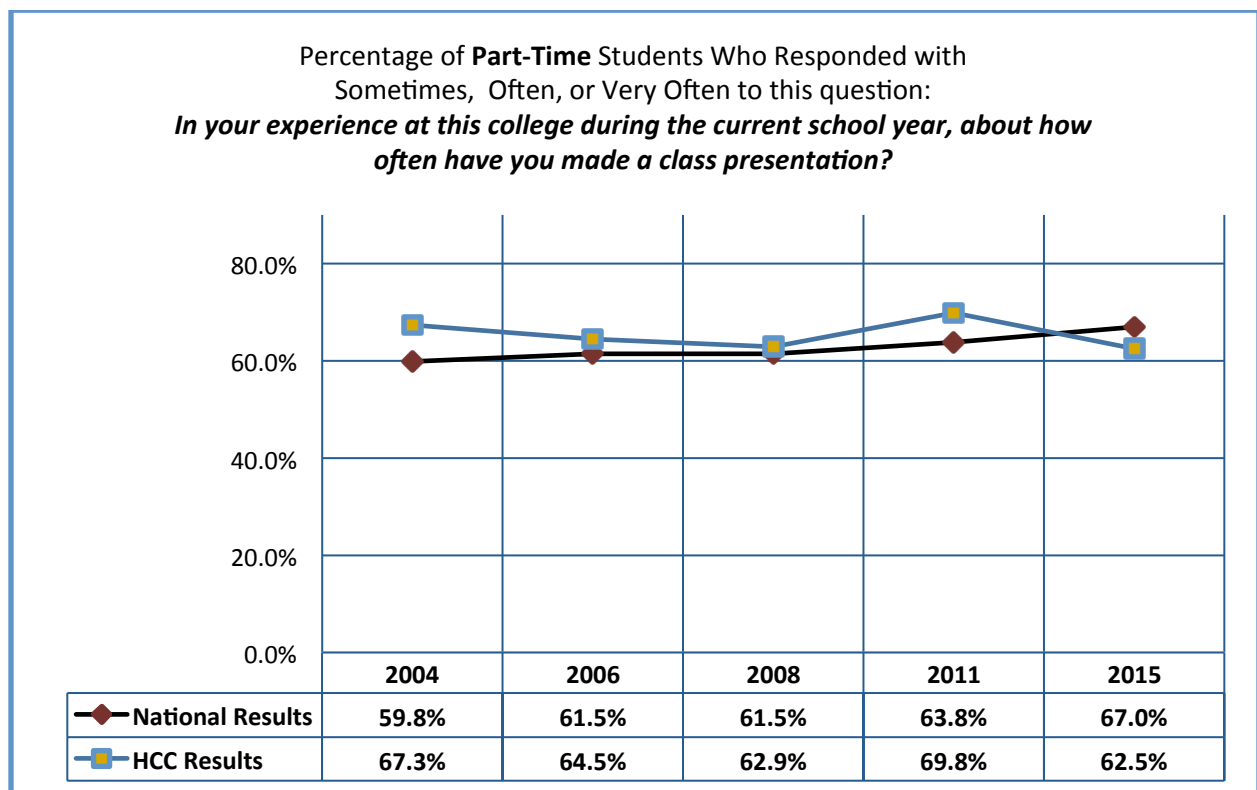
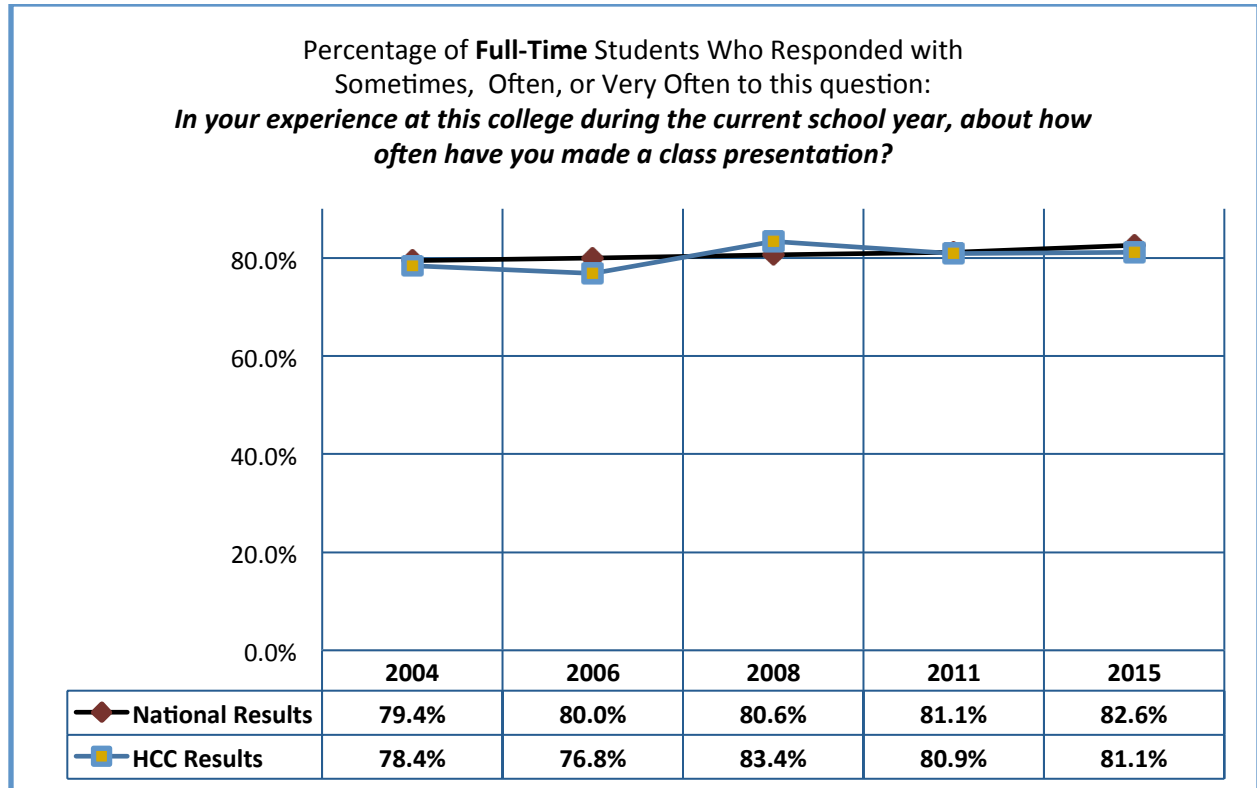
- Worked with classmates outside of class (full time students)
- Come to class without reading or preparing assignments (part time students)
- Coursework emphasized synthesizing and organizing ideas, information, or experiences (full and part time)
- Coursework emphasized applying theories or concepts to practical problems or in new situation (full and part time)
- Coursework emphasized using information they have read or heard to perform a new skill (full and part time)
- Students used e-mail to communicate with an instructor (full and part time)
- Talked about career plans with an instructor or advisor (full and part time students)
- College emphasizes providing the support students need to thrive socially (full and part time)
- College emphasizes providing the financial support you need to afford your education (full time students only)

Decreased Engagement over 10 years for HCC students reporting:

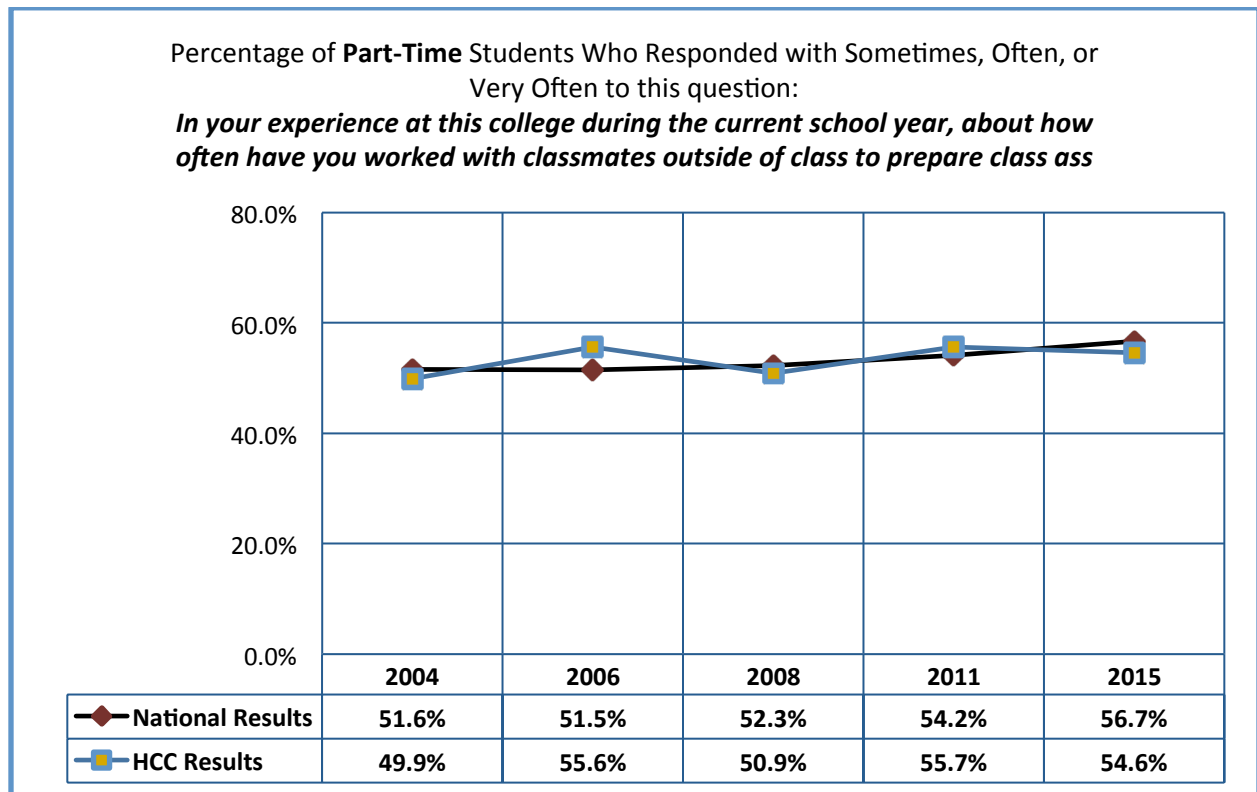
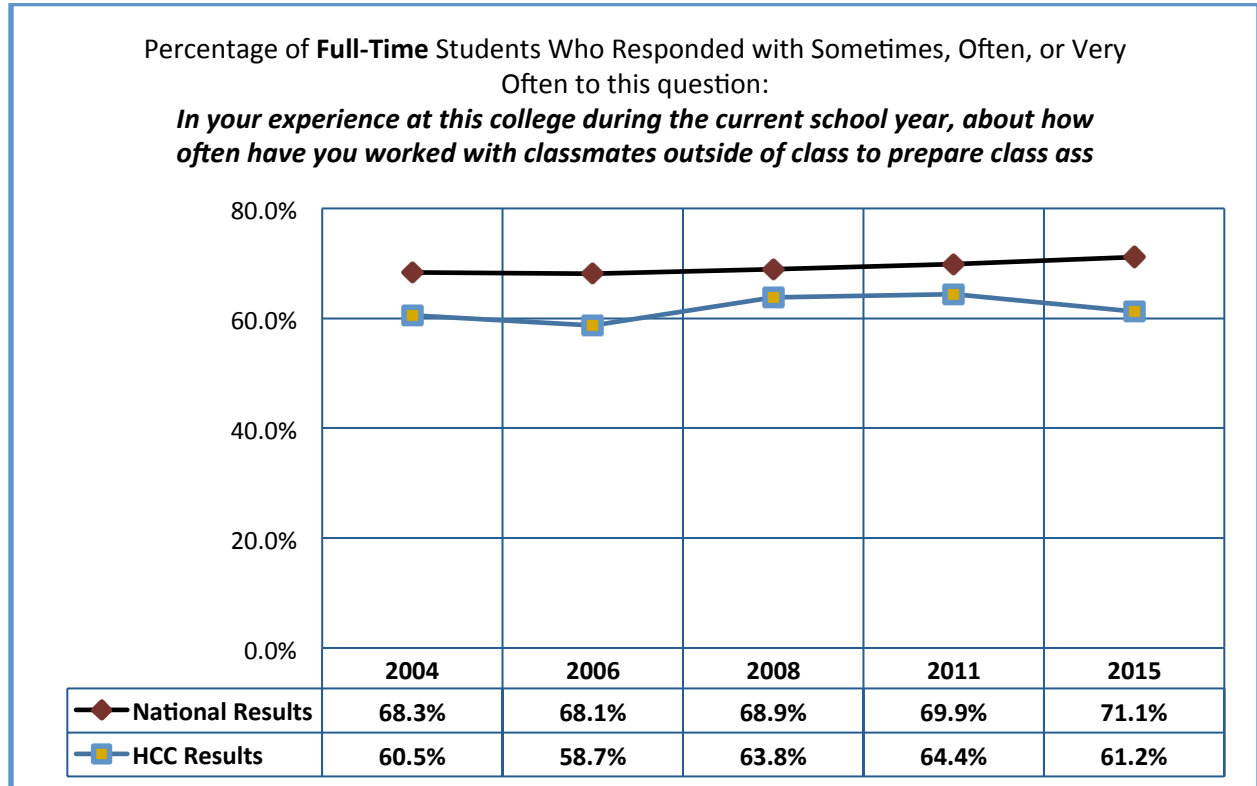
- Making class presentations (part time students)
- Come to class without reading or preparing assignments (full time students)

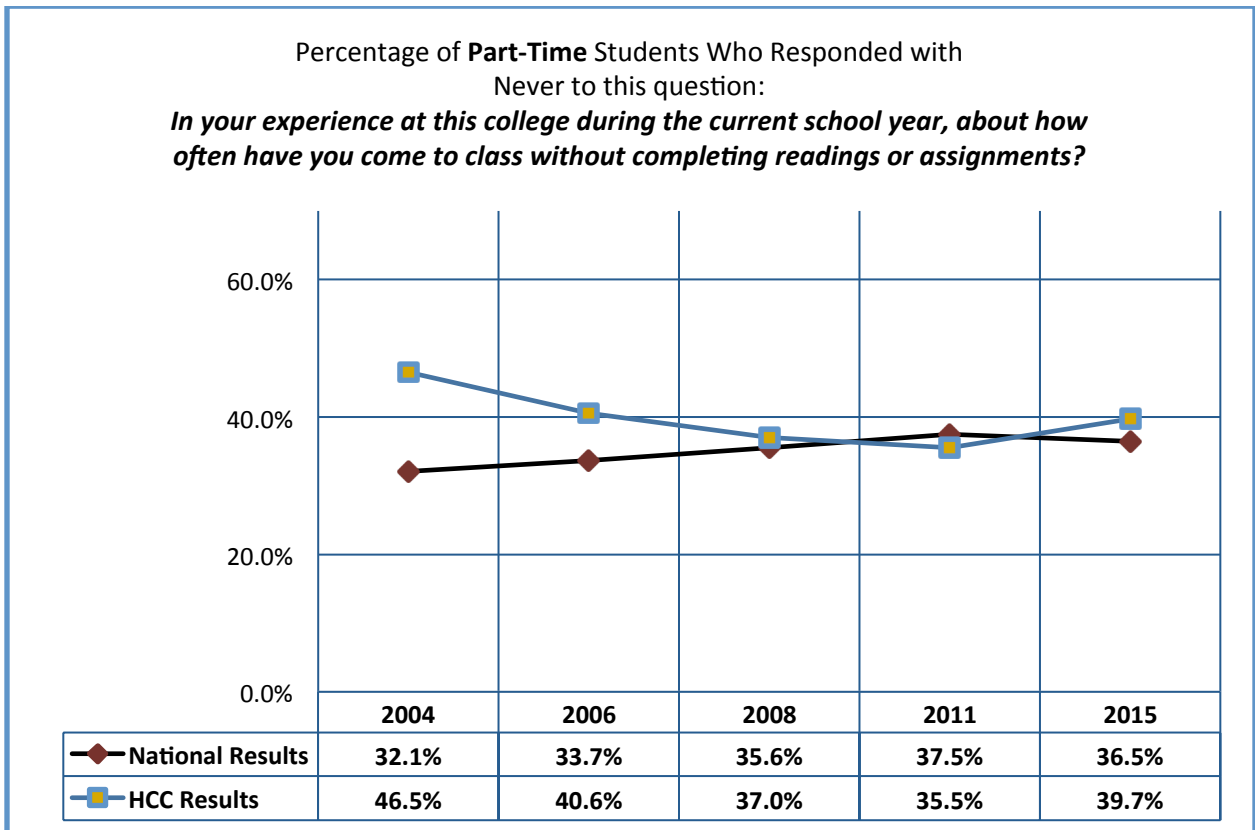
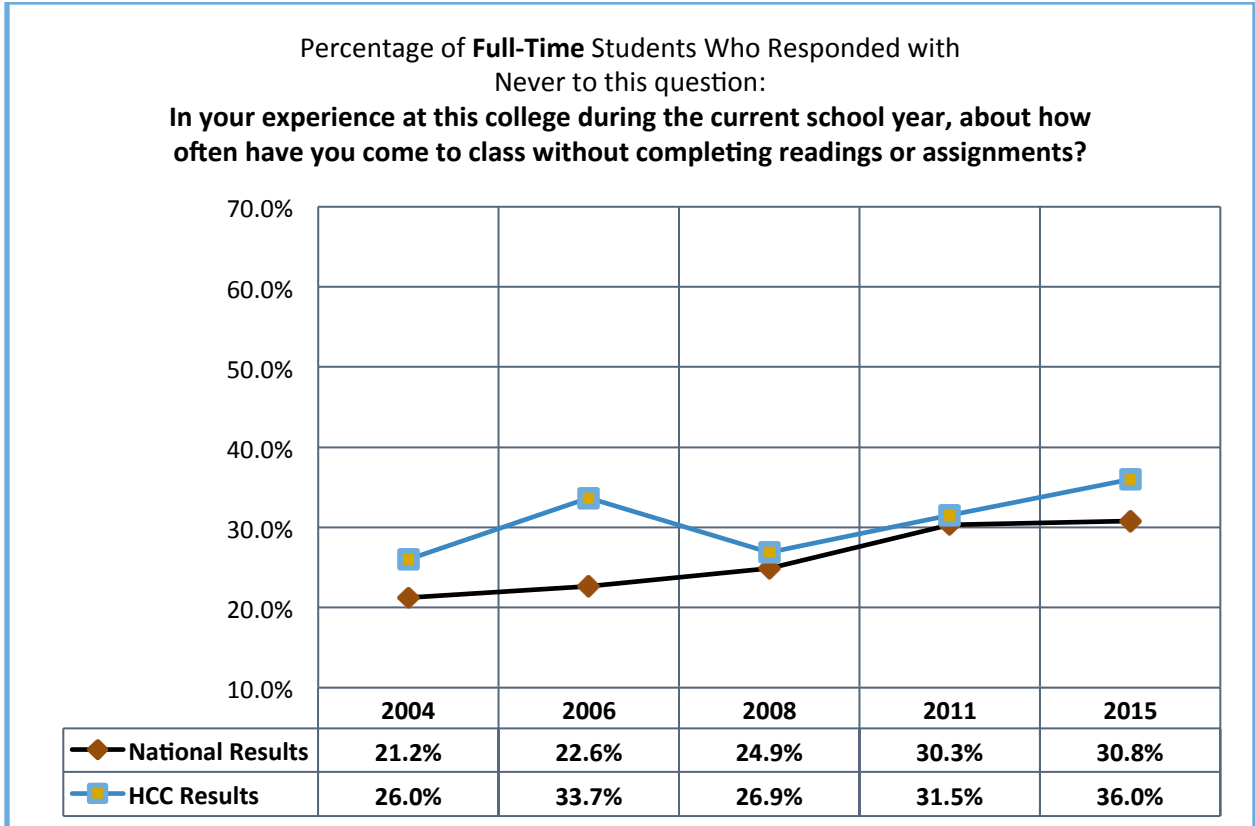
Please see following detailed information on subsequent pages of this document.

Variable: 4b clpresen

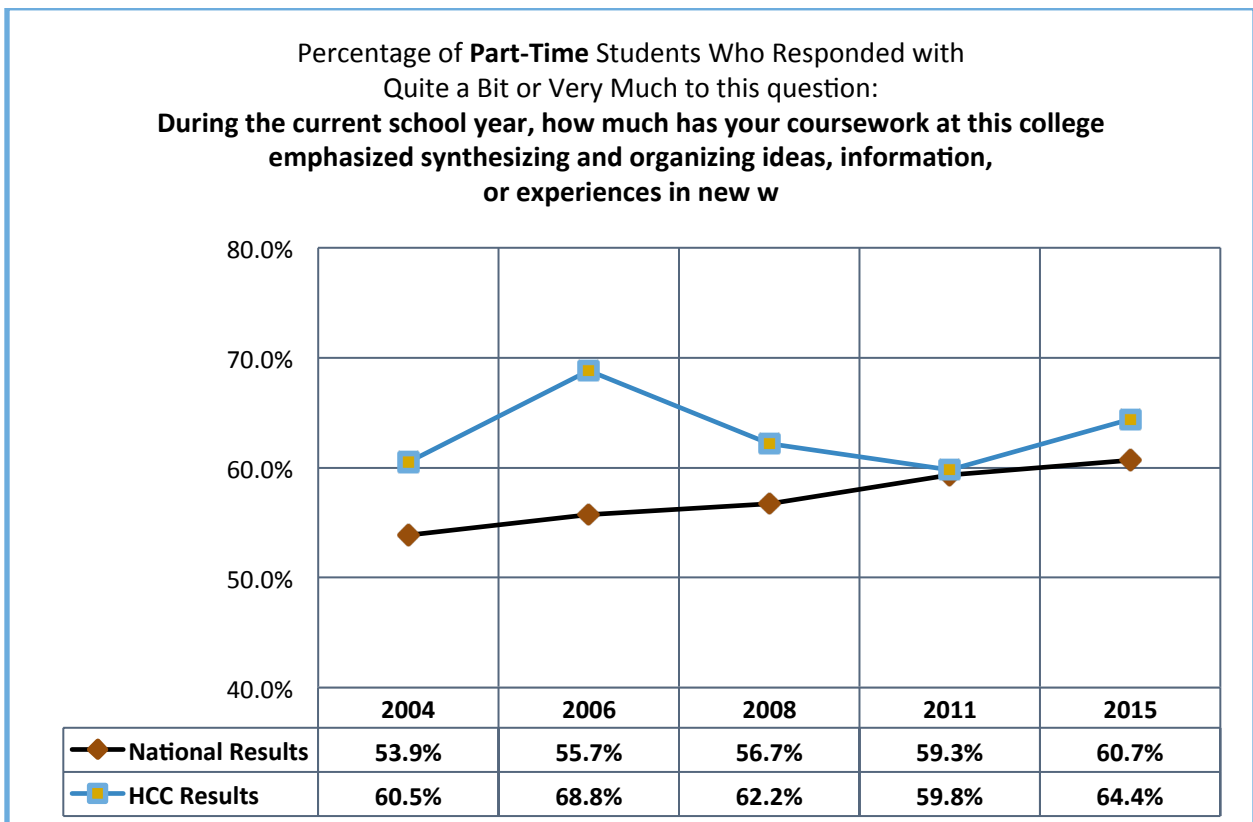
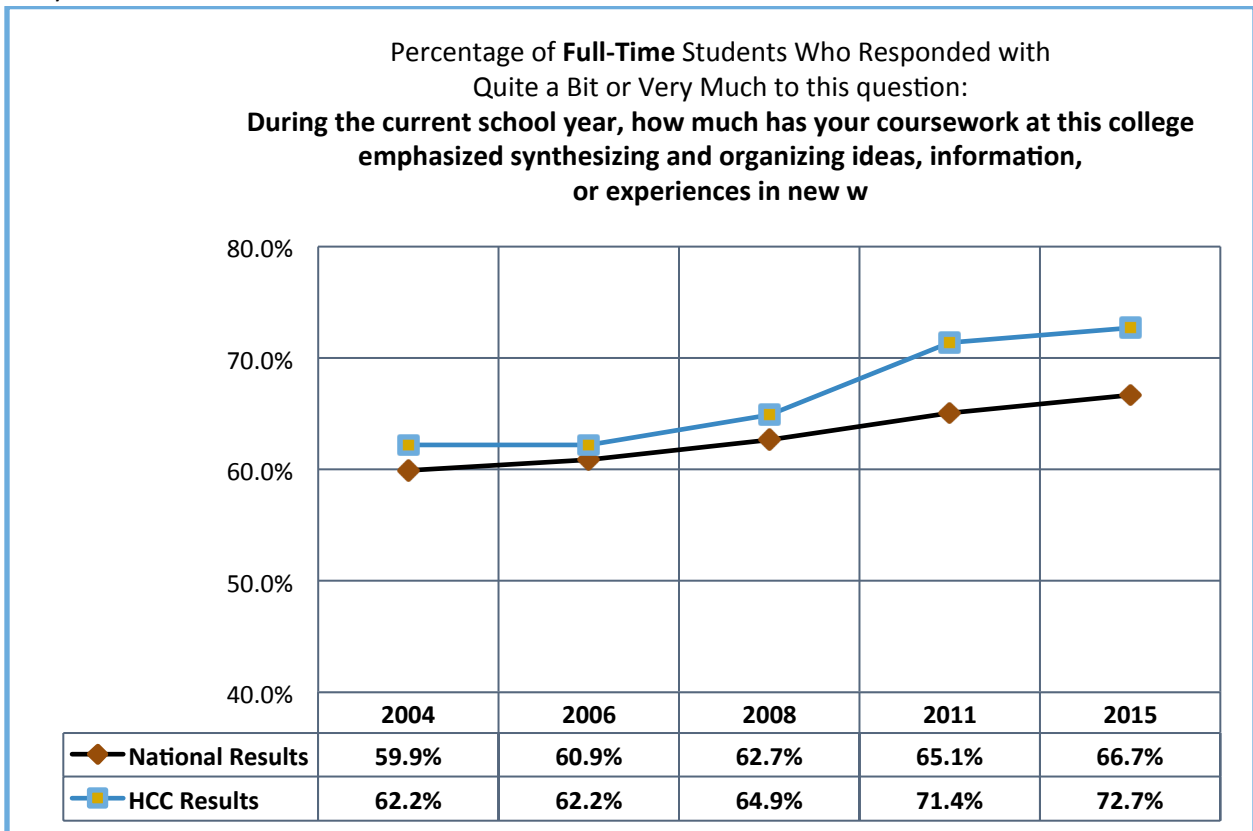


Variable: 4g occgrp

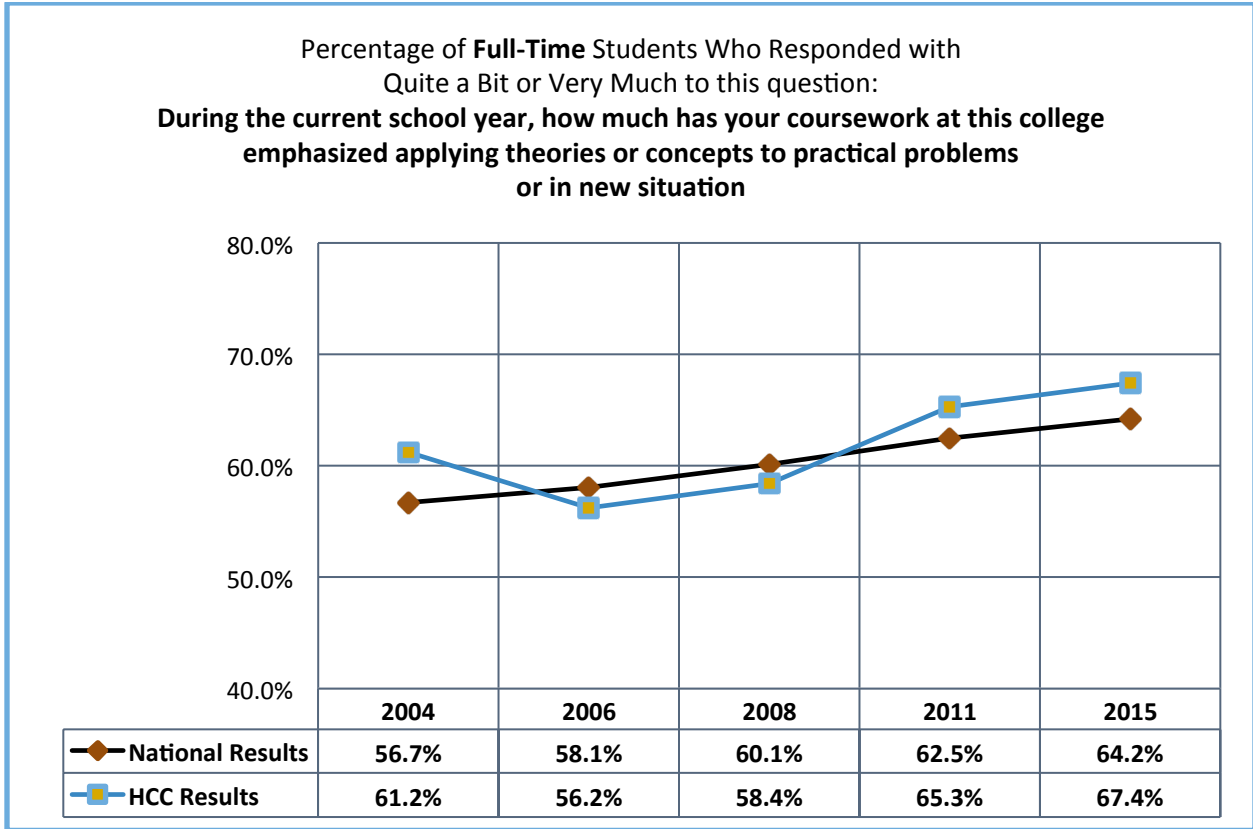




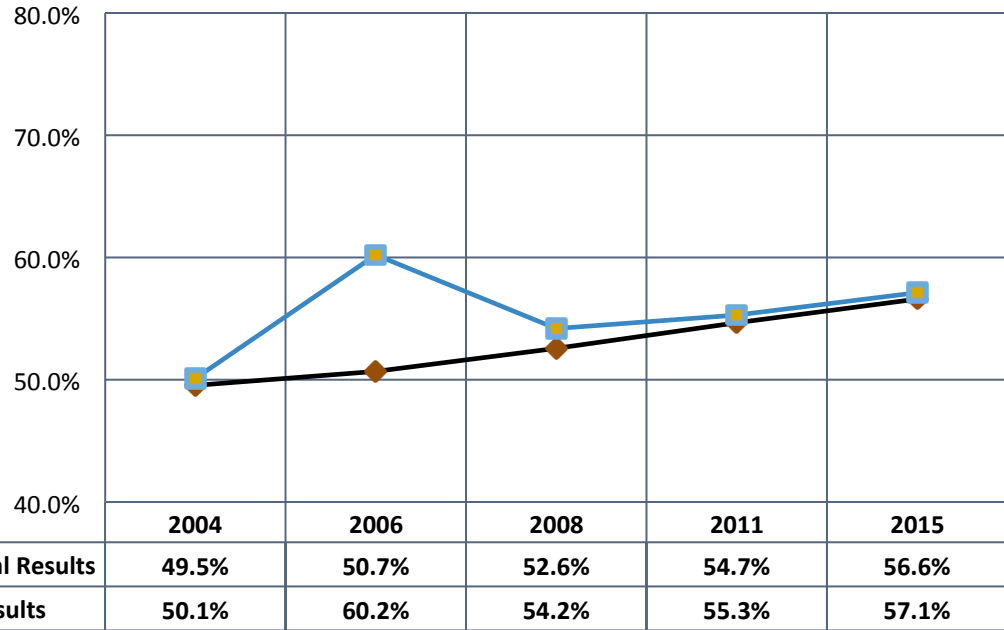
5c synthesiz

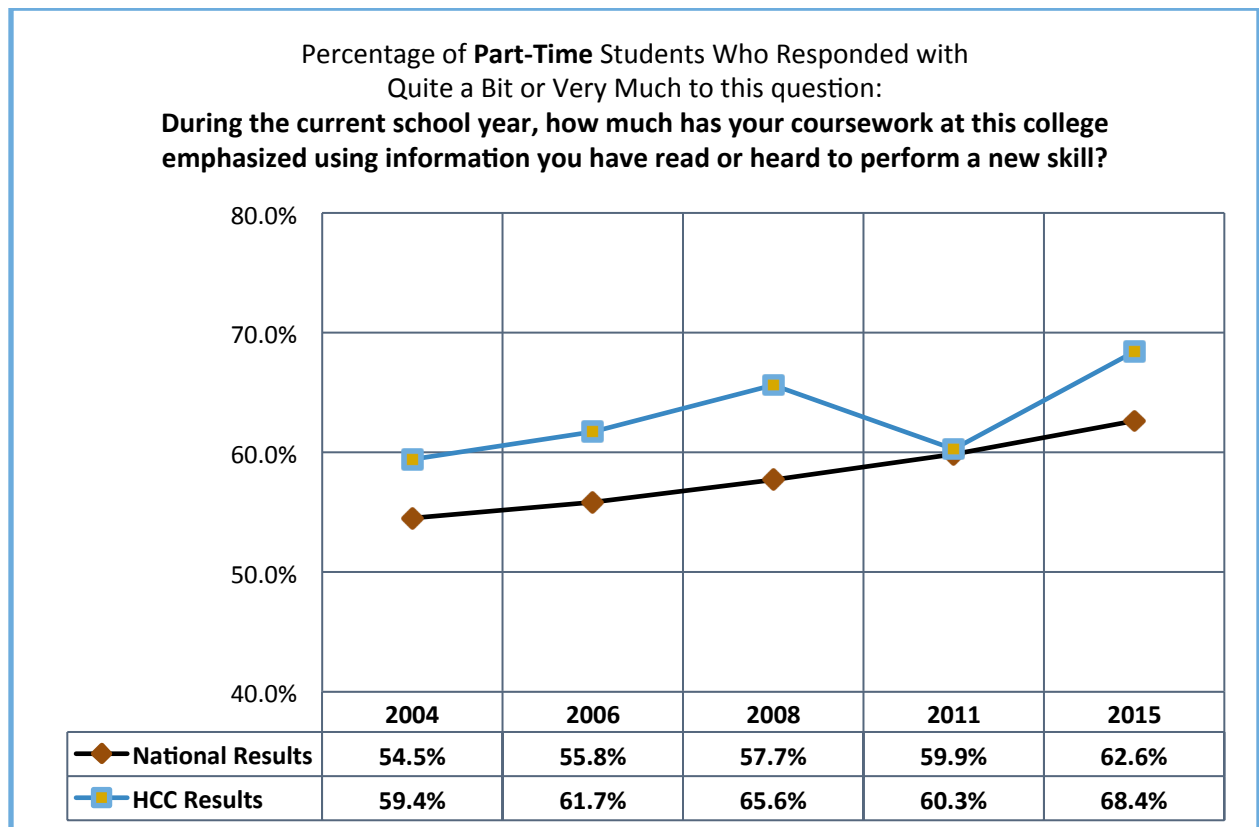
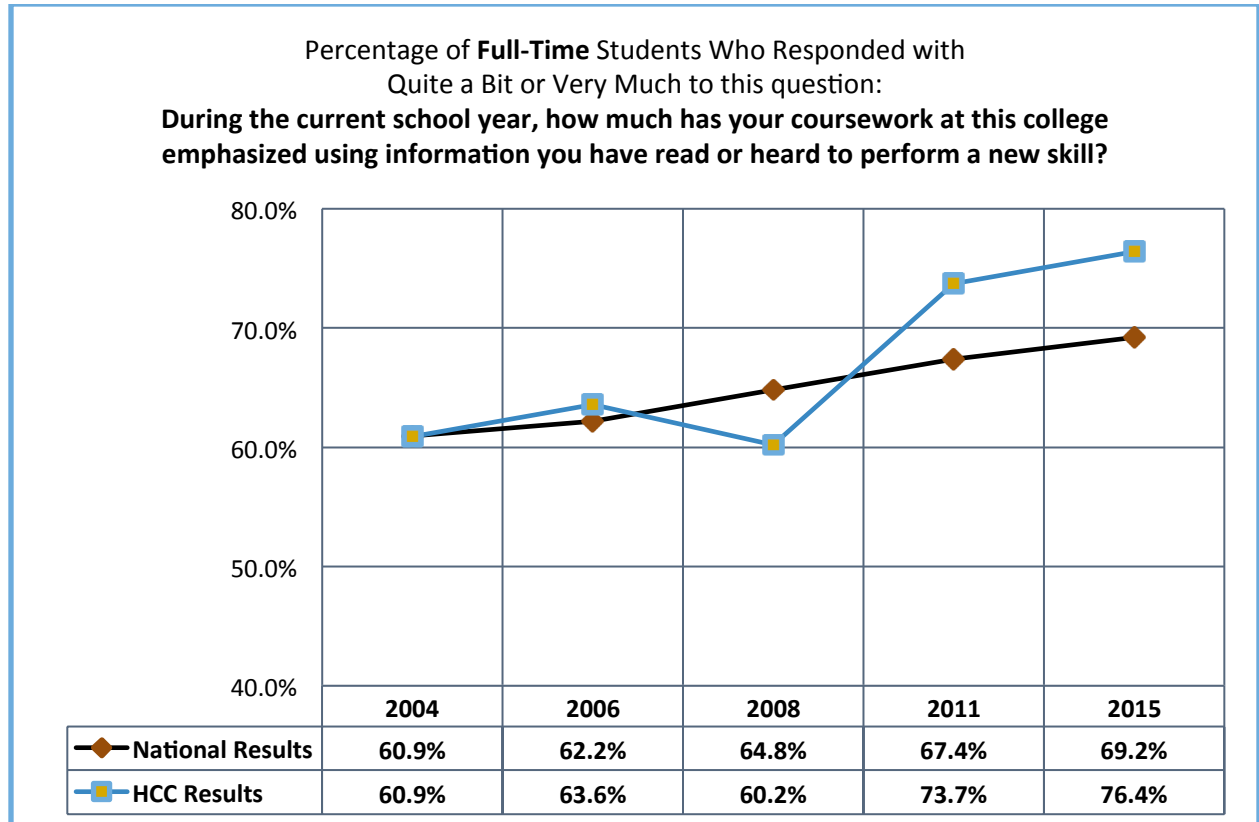


5e applying

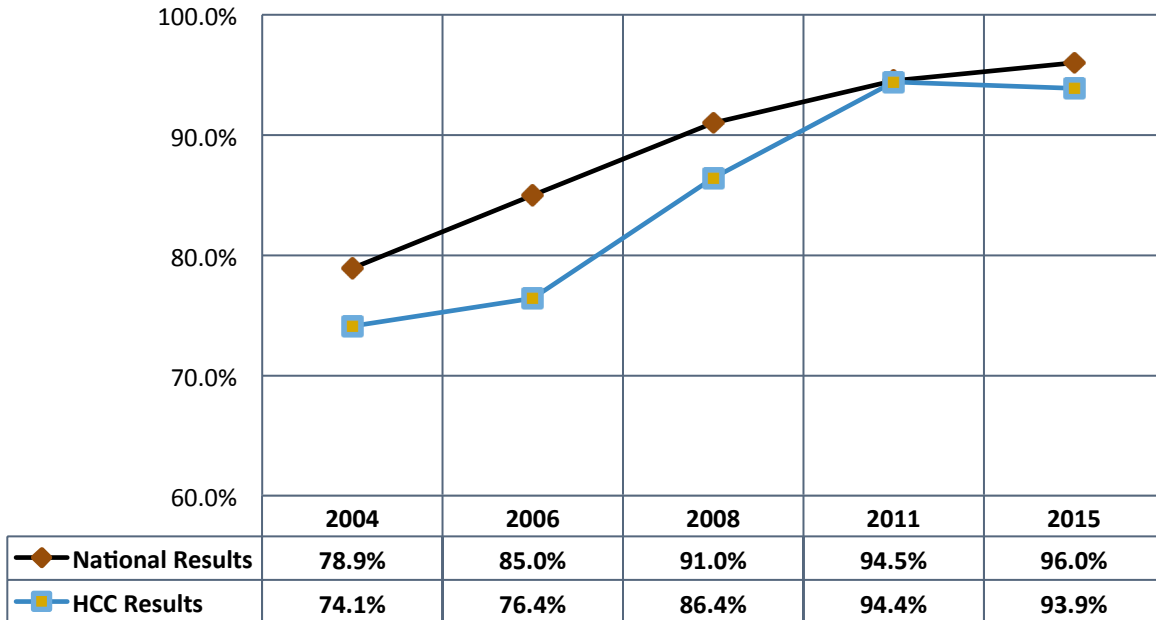


Percentage of **Part-Time** Students Who Responded with
Quite a Bit or Very Much to this question:
**During the current school year, how much has your coursework at this college
emphasized applying theories or concepts to practical problems
or in new situation**

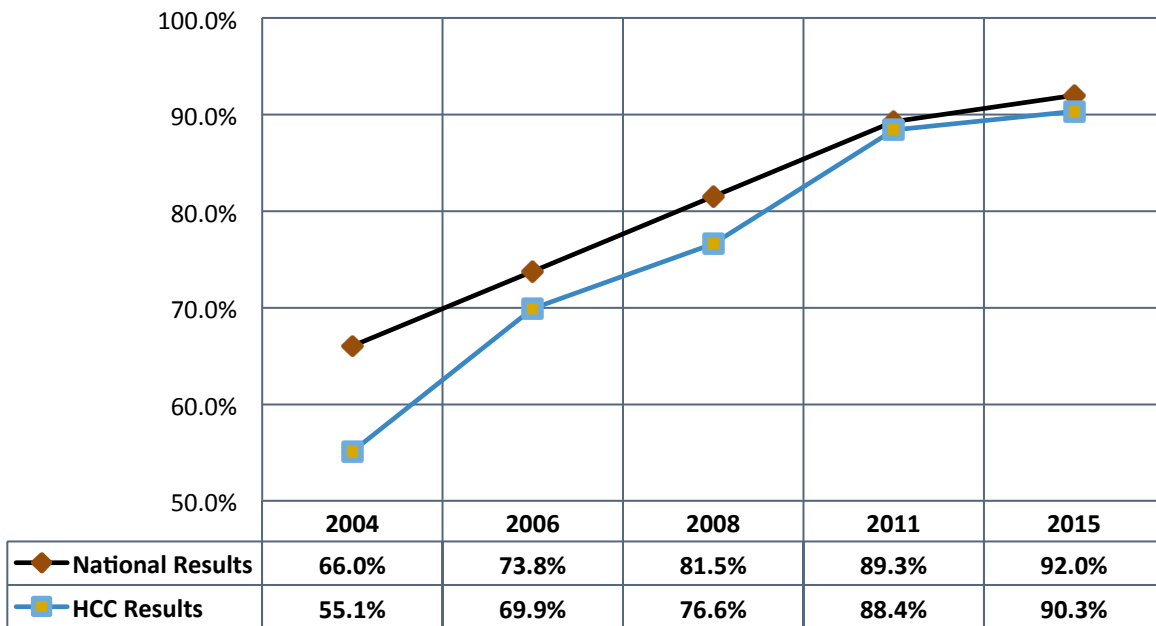




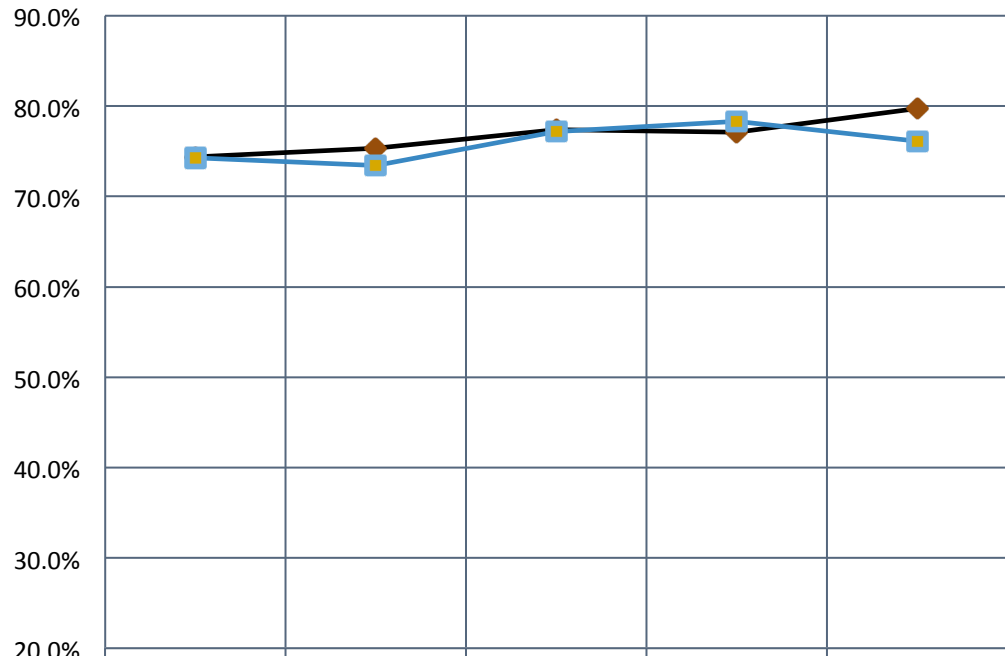
Percentage of **Full-Time** Students Who Responded with Sometimes, Often or Very Often to this question:
In your experience at this college during the current school year, about how often have you used e-mail to communicate with an instructor?



Percentage of **Part-Time** Students Who Responded with Sometimes, Often or Very Often to this question:
In your experience at this college during the current school year, about how often have you used e-mail to communicate with an instructor?

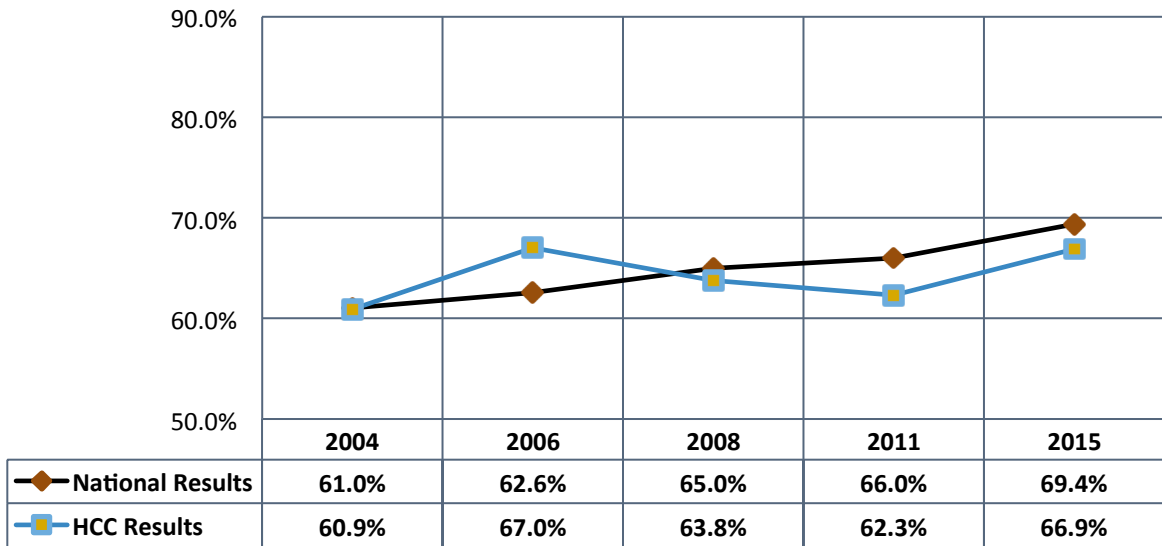


Percentage of **Full-Time** Students Who Responded with Sometimes, Often or Very Often to this question:
In your experience at this college during the current school year, about how often have you talked about career plans with an instructor or advisor?



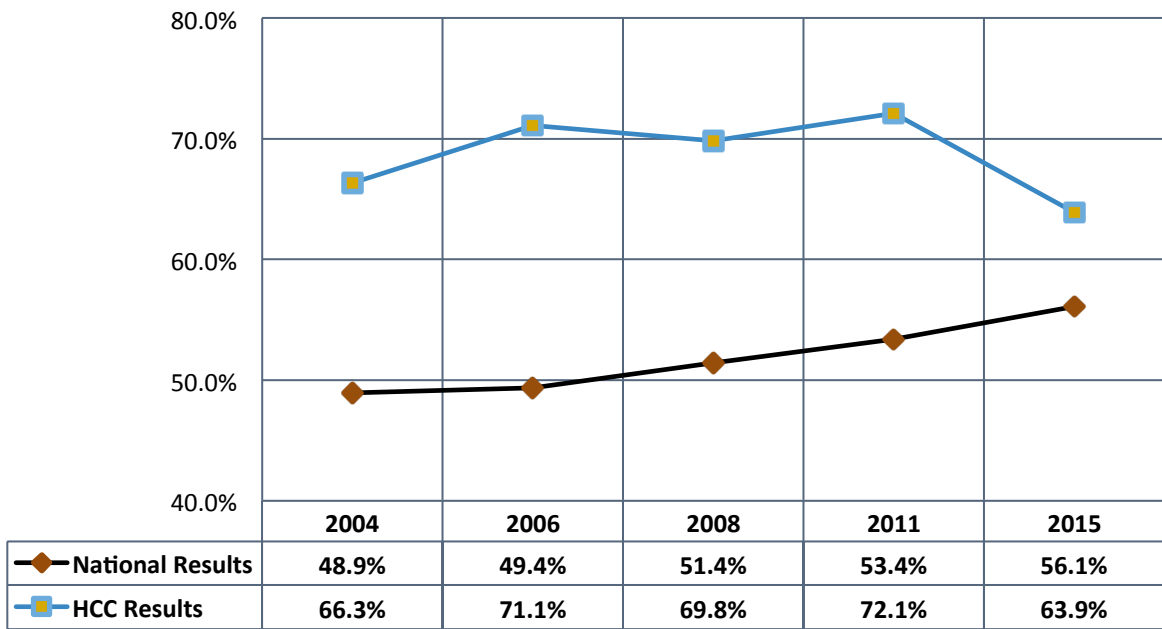
◆ National Results	74.4%	75.4%	77.4%	77.1%	79.7%
■ HCC Results	74.3%	73.4%	77.2%	78.3%	76.1%

Percentage of **Part-Time** Students Who Responded with Sometimes, Often or Very Often to this question:
In your experience at this college during the current school year, about how often have you talked about career plans with an instructor or advisor?

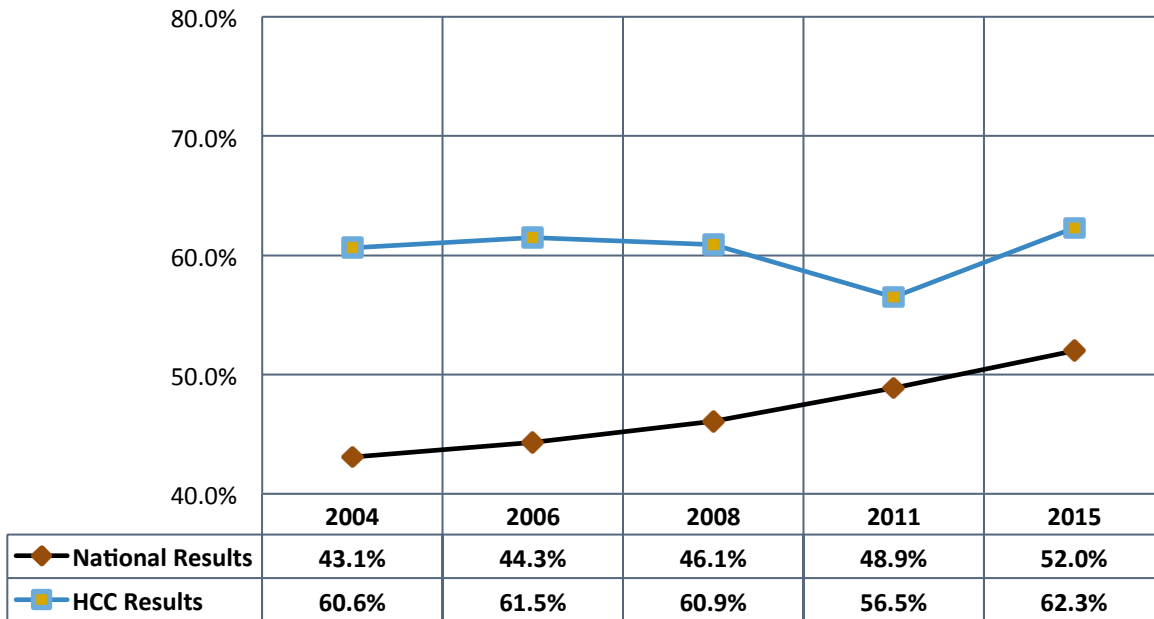


9c envdivrs

Percentage of **Full-Time** Students Who Responded with Quite a Bit or Very Much to this question:
How much does this college emphasize encouraging contact among students from different economic, social, and racial or ethnic backgrounds?

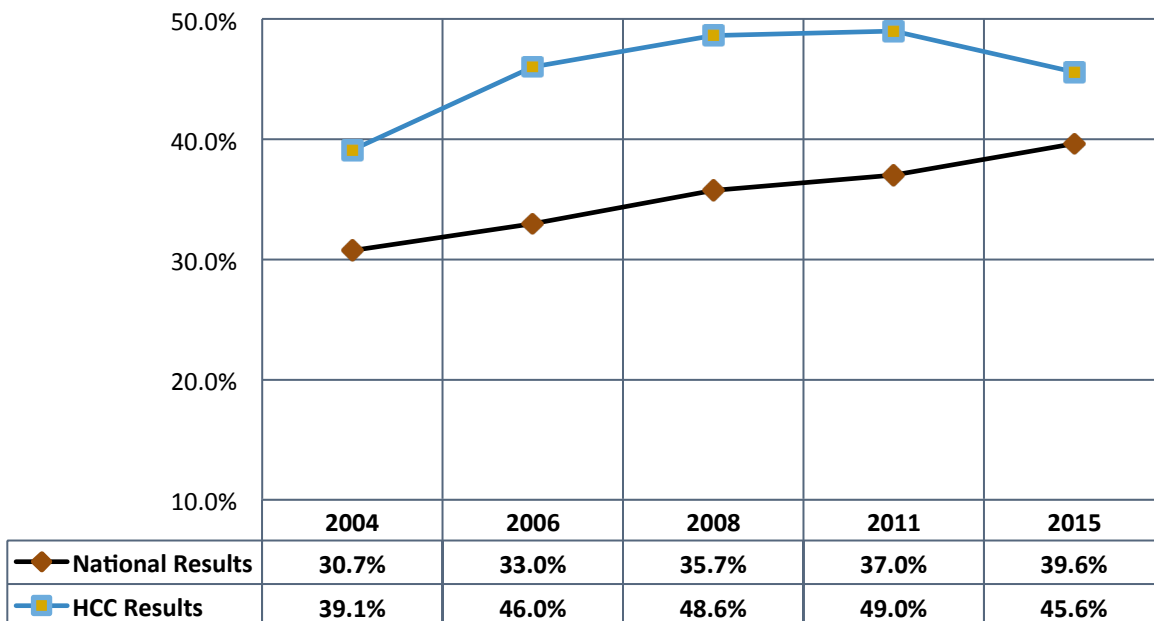


Percentage of **Part-Time** Students Who Responded with Quite a Bit or Very Much to this question:
How much does this college emphasize encouraging contact among students from different economic, social, and racial or ethnic backgrounds?

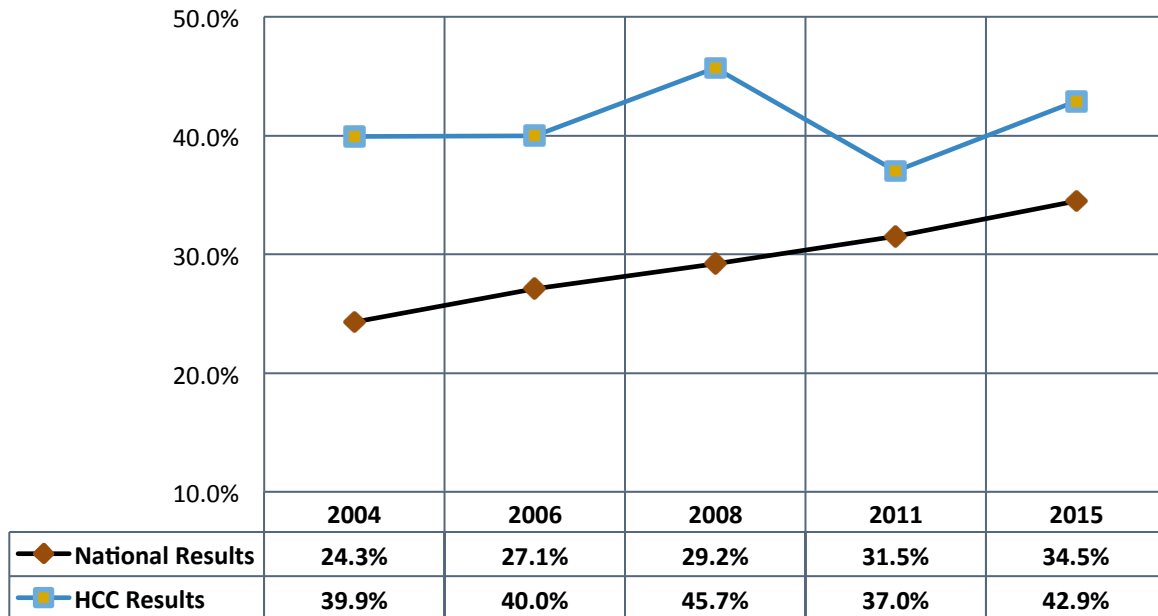


9e envsocial

Percentage of **Full-Time** Students Who Responded with Quite a Bit or Very Much to this question:
How much does this college emphasize providing the support you need to thrive socially?

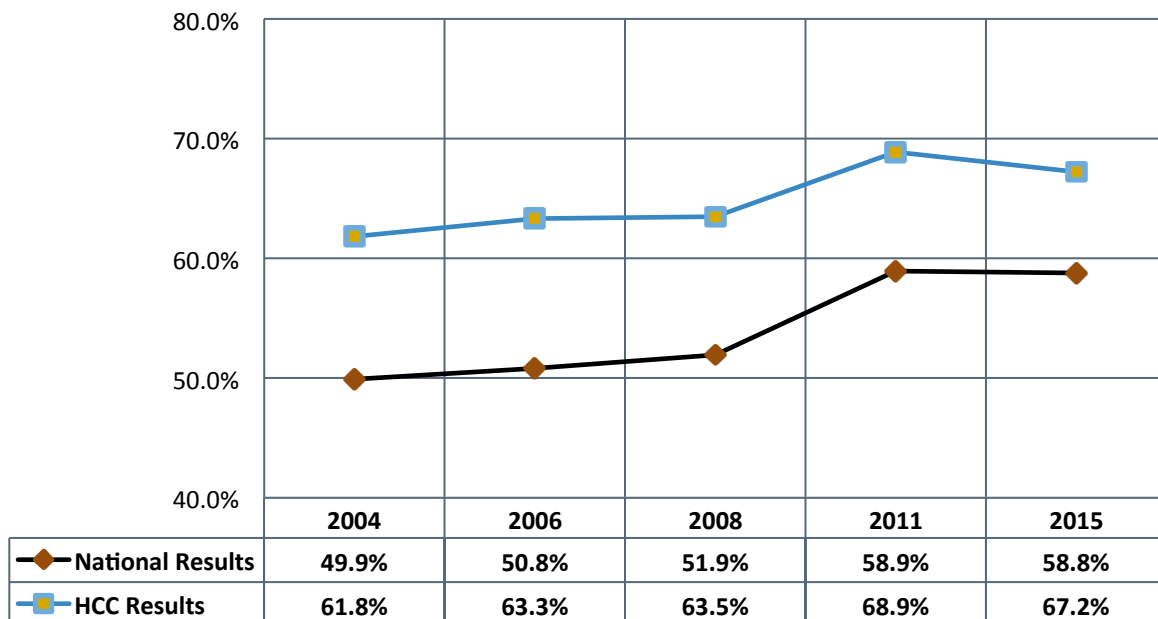


Percentage of **Part-Time** Students Who Responded with Quite a Bit or Very Much to this question:
How much does this college emphasize providing the support you need to thrive socially?



9f finsupp

Percentage of **Full-Time** Students Who Responded with Quite a Bit or Very Much to this question:
How much does this college emphasize providing the financial support you need to afford your education?



Percentage of **Part-Time** Students Who Responded with Quite a Bit or Very Much to this question:
How much does this college emphasize providing the financial support you need to afford your education?

